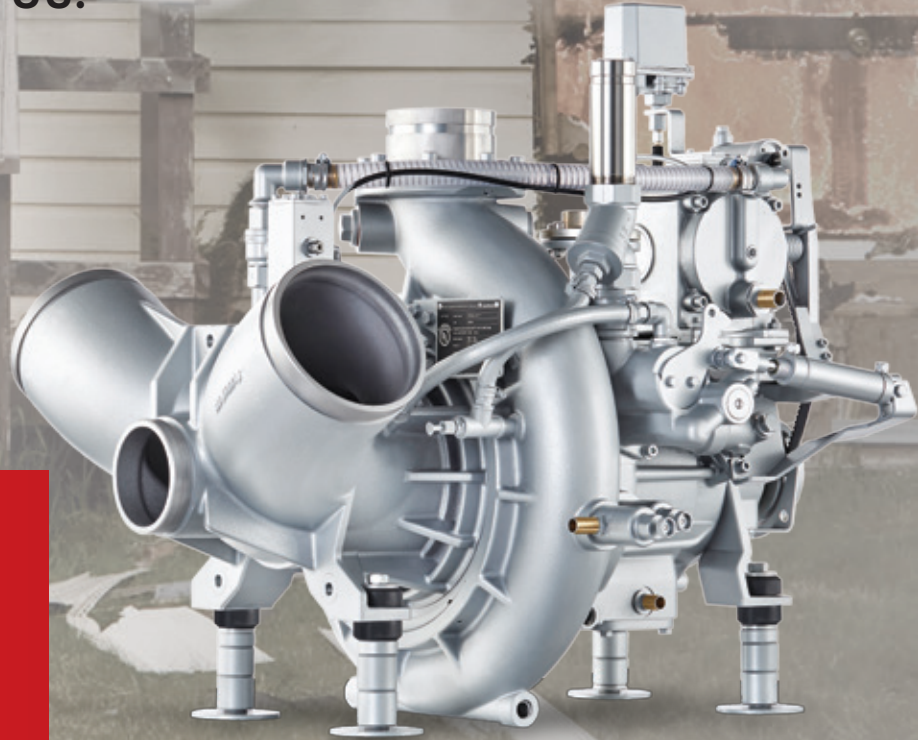




NH SERIES PUMP



**ROSENBAUER - THE ONLY ONE,
TRUE-SOURCE PROVIDER FOR
A COMPLETE FIRE APPARATUS.**



DRIVE OPTIONS

- ⦿ PTO Direct Driven - No Gear Box
- ⦿ PTO Gear Box with Multiple Drive Ratios
- ⦿ Split Shaft Gear Box

- Rosenbauer 500, 750, 1000, 1250 and 1500 GPM Single-Stage fire pumps, combined with a Rosenbauer 100 GPM, 600 PSI Four-Stage High Pressure Pump on one common shaft
- UL classified according to NFPA 1901
- Capable of volume and high pressure flows simultaneously
- Reduced water use when operating with high-pressure
- CAFS-like foam on high pressure
- Shaft supported by three bearings
- High grade stainless steel shaft
- 3D Spiral shaped impeller

- Bearings and seals are maintenance-free
- Self-adjusting mechanical seals
- High strength, light weight aluminum alloy
- Optional bronze sea water resistant housing and impellers
- Water strippers in the housing for best efficiency
- Vertically split pump case for ease of service
- Five-year warranty
- Quiet & efficient operation
- Optional around-the-pump foam system FIXMIX with up to three Ratios
- Automatic primer system

ROSENBAUERAMERICA.COM

INFO@ROSENBAUERAMERICA.COM

[f](#) ROSENBAUER GROUP

[t](#) @ROSYFIRE

[v](#) ROSENBAUERFIRE

Rosenbauer South Dakota, LLC
100 Third Street; Lyons, SD 57041
605.543.5591

Rosenbauer Minnesota, LLC
5181 260th Street; Wyoming, MN 55092
651.462.1000

Rosenbauer Motors, LLC
5190 260th Street; Wyoming, MN 55092
651.462.1000

Rosenbauer Aerials, LLC
870 S Broad Street; Fremont, NE 68025
402.721.7622