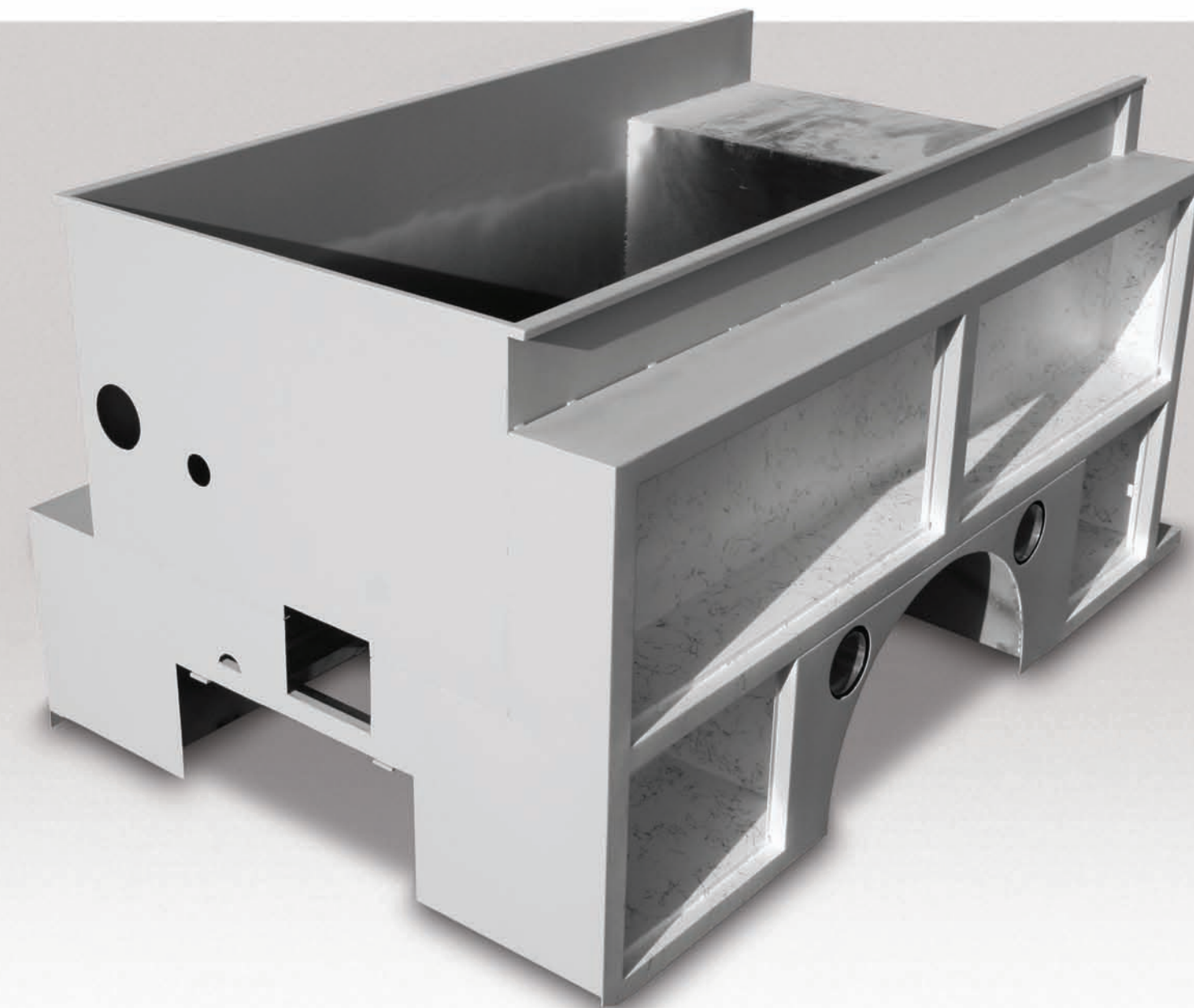




The Best Equipment Adapts to Your Needs

Rosenbauer FL body styles feature a wide range of compartment configurations so that you can build the truck you want. Rosenbauer also provides a wide assortment of shelves, roll-out trays and equipment mounting provisions to keep all your equipment organized for easy access.

ROSENBAUER
FL BODY



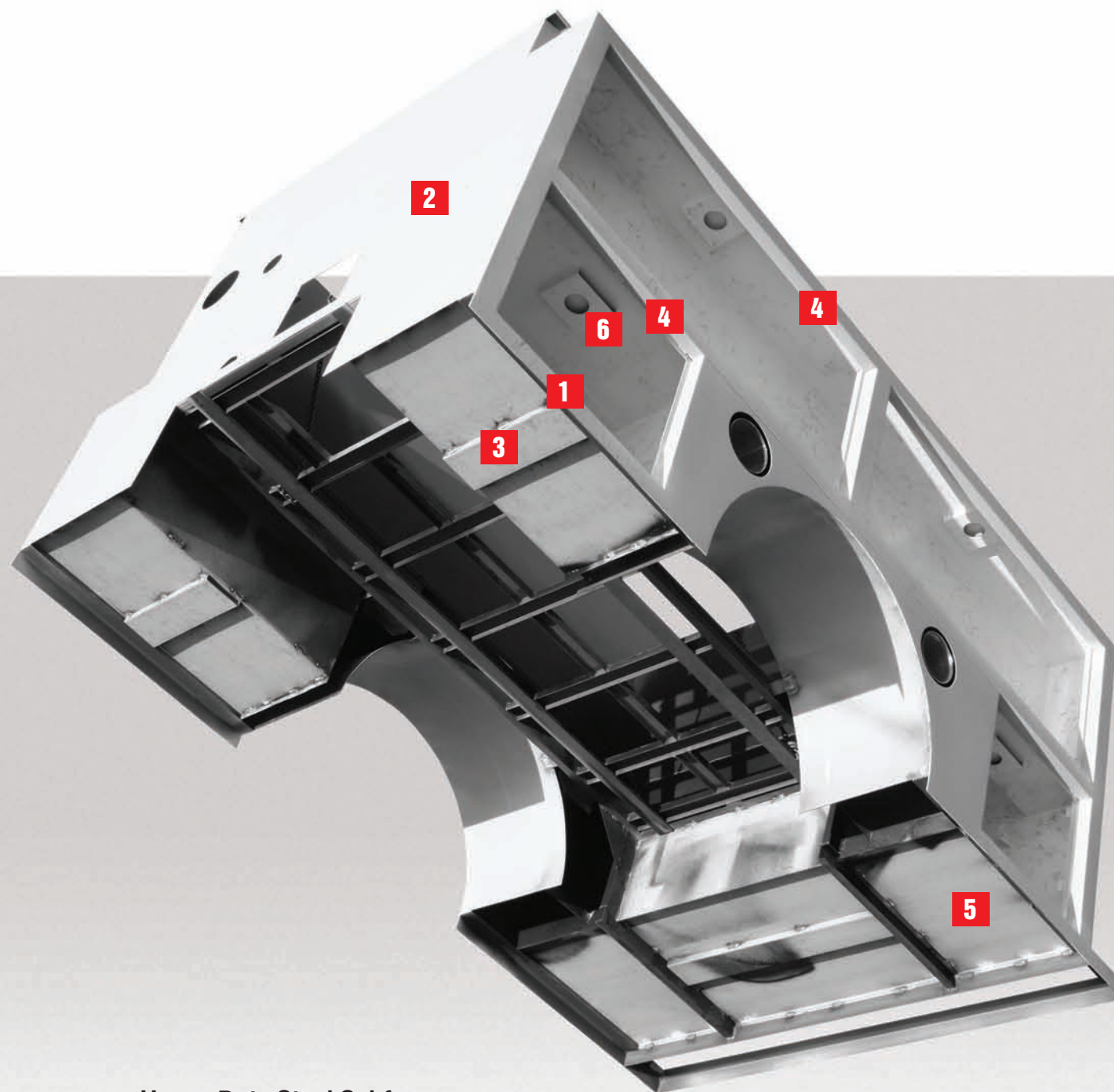
SOUTH DAKOTA DIVISION
100 THIRD STREET
LYONS, SOUTH DAKOTA 57041
P: 605.543.5591

MINNESOTA DIVISION
5181 260TH STREET
WYOMING, MINNESOTA 55092
P: 651.462.1000

AERIALS DIVISION
870 SOUTH BROAD STREET
FREMONT, NEBRASKA 68025
P: 402.721.7622

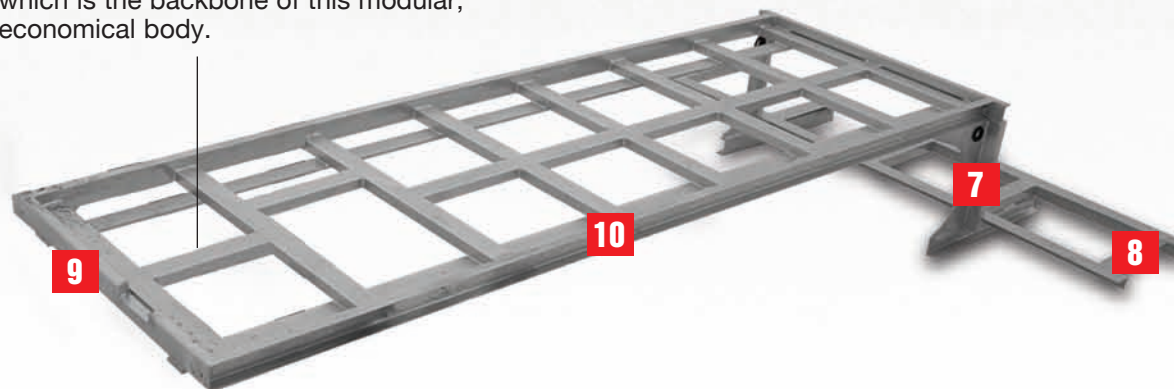
SALES DIVISION
P: 605.543.5551
E: info@rosenbaueramerica.com

ROSENBAUER
ECONOMICAL AND DURABLE

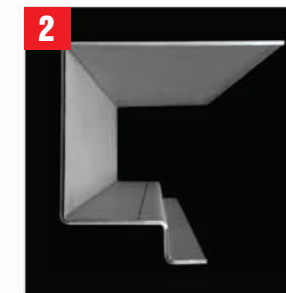


Heavy-Duty Steel Subframe

Heavy-duty steel tube, channel, angles and gussets are welded together to form an extremely strong subframe, which is the backbone of this modular, economical body.



1 Angled Body Support
(3" x 3") Provides extra support along the bottom of the body.



2 Forward Body Face with Integrated Vertical Structure Support



3 Floor Reinforcement



4 Top and Intermediate Support Structure



5 Bottom Compartment Floor



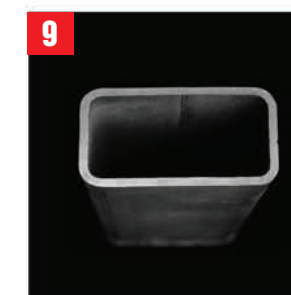
6 Top Compartment Floor



7 Flat Gusset Plate
(.375" Steel)



8 Angled Body Outrigger
(2" x 3")



9 Steel Tubing
(1.75" x 3")



10 Subframe Channel
(1.75" x 3")



Space for your largest equipment

Flush-mounted hinged doors with stainless steel hardware allow full-width storage. Compartments can also be customized to fit your needs with shelves, roll-out trays and equipment mounts.



Doors designed for safety and convenience

Roll-up doors give you easy access to adjustable shelves, roll-out trays and tool boards without extending into the roadway for added safety.



Wiring you can rely on

Heavy gauge function and color-coded wiring along with resetting circuit breakers and junction strips form the basis for a reliable wiring system.



Detailed, precise paint application

Rosenbauer's state-of-the-art paint process is environmentally controlled for precise application. Paint is mixed to create or match any shade and then applied and baked for a durable, consistent, high-gloss finish.